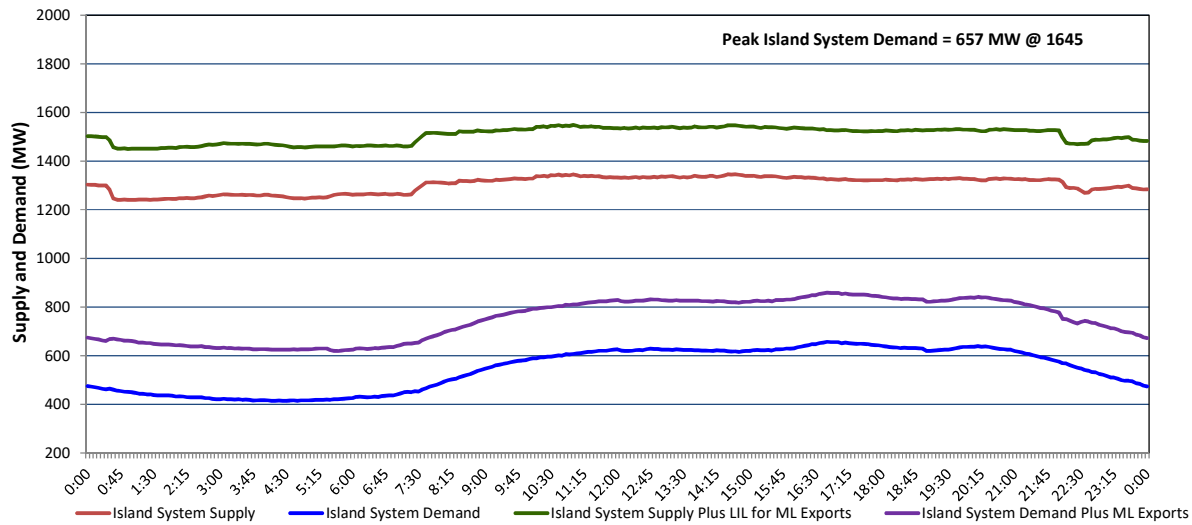


# Newfoundland Labrador Hydro (NLH) Supply and Demand Status Report Filed Monday, September 08, 2025

## Section 1 Island Interconnected System - Supply, Demand & Exports Actual 24 Hour System Performance For Sunday, September 07, 2025



### Island Supply Notes For September 07, 2025 <sup>1</sup>

- A As of 0800 hours, March 30, 2025, Holyrood Unit 3 unavailable due to planned outage 130 MW (150 MW).
- B As of 0823 hours, March 31, 2025, Bay d'Espoir Unit 1 unavailable due to planned outage (76.5 MW).
- C As of 0823 hours, March 31, 2025, Bay d'Espoir Unit 2 unavailable due to planned outage (76.5 MW).
- D As of 0800 hours, June 08, 2025, Holyrood Unit 2 unavailable due to planned outage 115 MW (170 MW).
- E As of 1400 hours, June 29, 2025, St. Anthony Diesel Plant available at 7.7 MW due to forced derating (9.7 MW).
- F As of 1439 hours, August 27, 2025, Upper Salmon Unit unavailable due to planned outage (84 MW).
- G As of 0751 hours, September 02, 2025, Stephenville Gas Turbine unavailable due to planned outage (50 MW).
- H As of 2000 hours, September 06, 2025, Holyrood Unit 1 unavailable due to forced extension to planned outage (170 MW).

## Section 2 Island Interconnected System - Supply, Demand & Outlook

Mon, Sep 08, 2025	Island System Outlook <sup>2</sup>	Seven-Day Forecast	Island System Daily Peak Demand (MW)	
			Forecast <sup>8</sup>	Adjusted <sup>6</sup>
Island System Supply: <sup>4</sup>	1,392 MW	Monday, September 8, 2025	795	745
NLH Island Generation: <sup>3,7</sup>	915 MW	Tuesday, September 9, 2025	710	660
NLH Island Power Purchases: <sup>5</sup>	85 MW	Wednesday, September 10, 2025	735	685
NP and CBPP Owned Generation:	185 MW	Thursday, September 11, 2025	755	705
LIL/ML Net Imports to Island: <sup>9</sup>	207 MW	Friday, September 12, 2025	750	700
		Saturday, September 13, 2025	775	725
7-Day Island Peak Demand Forecast:	795 MW	Sunday, September 14, 2025	785	735

### Island Supply Notes For September 08, 2025

- Notes:
1. Generation outages for running and corrective maintenance are included. These are not unusual for power system operations. They generally do not impact customer supply. Hydro schedules outages to system equipment whenever possible to coincide with periods when customer demands are low and sufficient supply reserves are available. However, from time to time equipment outages are necessary and reserves may be impacted.
  2. As of 0800 Hours.
  3. Gross continuous unit output.
  4. Gross output from all Island sources (including Note 3).
  5. NLH Island Power Purchases include: ML Imports, Exploits Generation, Rattle Brook, Star Lake, Wind Generation and capacity assistance (when applicable).
  6. Adjusted for interruptible load and the impact of voltage reduction when applicable.
  7. Due to limitations inherent in the design of combustion turbines, the output of combustion turbines may be reduced in the event that ambient temperatures exceed the threshold required for full rated output. This threshold is dependent on the design of each turbine.
  8. Does not include ML Exports.
  9. LIL Import sunk in the Island System. Actual LIL flows will be restricted by various system conditions including, but not limited to, Island Load, ML Exports and Avalon Unit status.

## Section 3 Island Peak Demand and Exports Information Previous Day Actual Peak and Current Day Forecast Peak

Sun, Sep 07, 2025	Island Peak Demand <sup>10</sup>	16:45	657 MW
	Exports at Peak		202 MW
	LIL Net Imports to Island		4,883 MWh
Mon, Sep 08, 2025	Forecast Island Peak Demand		795 MW

- Notes:
10. Island Demand is supplied by NLH generation and purchases, LIL Imports plus generation owned and operated by Newfoundland Power and Corner Brook Pulp & Paper (Deer Lake Power, DLP).